

ELCB DBM

Product code : REDPEL101

Features:

- Elcb Distribution board mount use 4 way, it is compact and look very good.
- High voltage prevention, cut off supply for line voltage above 290V, On supply automatically when voltage is stable.
- Low voltage prevention, cut off supply for line voltage below 140V, On supply automatically when voltage is stable.
- Earth leakage set from 3 to 50 mA using white pot.
- Delay start 4 second for protect against start surge.
- Bypass facility **for emergency only**.
- Supply on, bypass, high volt and trip indication.

Application:

The ELCB is disconnect the supply of home or office when detecting the voltage fluctuation, over load and leakage limit cross. It is used to protect home safe from leakage, over load and voltage variation.

Precautions:

- Keep device away from direct water fall or rain.
- keep safe from direct sun light.
- make screw tight properly.

Device controlling mode:

- **Auto** : In auto condition of ELCB unit provide all voltage, and leakage protection.
- **Bypass** : In bypass condition of ELCB the bypass red led is on and unit can not protect any parameter.
- Press Bypass button for switch from auto to bypass or bypass to auto condition.

PRODUCT SPECIFICATION

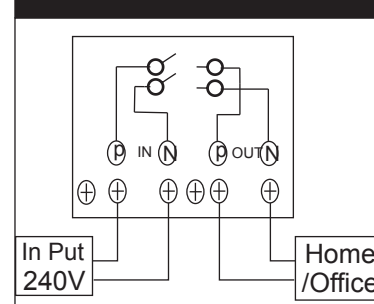
Product code	REDPEL101
Supply Characteristics	
Supply Voltage	240VAC, +-20%
Supply Frequency	47-63 Hz.
Power consumption	3.5VA
DEVICE Characteristics	
High volt protection	290V, and restart auto after voltage below 10 V lower from set point.
Low volt protection	140V, and restart auto after voltage above 10 V higher from set point.

Leakage current	Set from 3 to 50 mA
Over load	32 Amp
Led Indication	Led 1 : green : For relay on
	Led 2 : red : For Bypass
	Led 3 : red : For High volt
	Led 4 : red : For Trip
Output mode	Relay On / Off
Contact Ratings	2 N/O, 32 Amp @ 250VAC,
Electrical life	10,00,000 Operation
Mechanical life	10,00,000 Operation
Operating Temperature	-10°c to +60°c
Storage Temperature	10°c to +70°c
Weight Approx.	300 Gram.
Relative Humidity	5 to 15% RH (non condensing)
Mounting type	Base mount

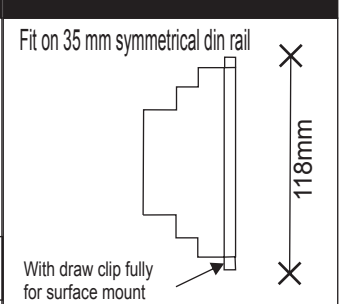
Operation Characteristics

Set Leakage	Connection according to drawing and then put tripping sensitivity full and unit in auto mode, On all home appliances. Then decrease tripping sensitivity using white knob. at level the out put is off put tripping sensitivity some high then it.
Switches test	Test switch is used for test the unit.
Switches Reset	Reset switch is used for restart the unit.
Standard test	As per IS 12640 : 1988. (BS 4293:1983)

CONNECTION DIAGRAM



DRILL DIAGRAM



Specification are subject to change without notice due to continuous improvement

